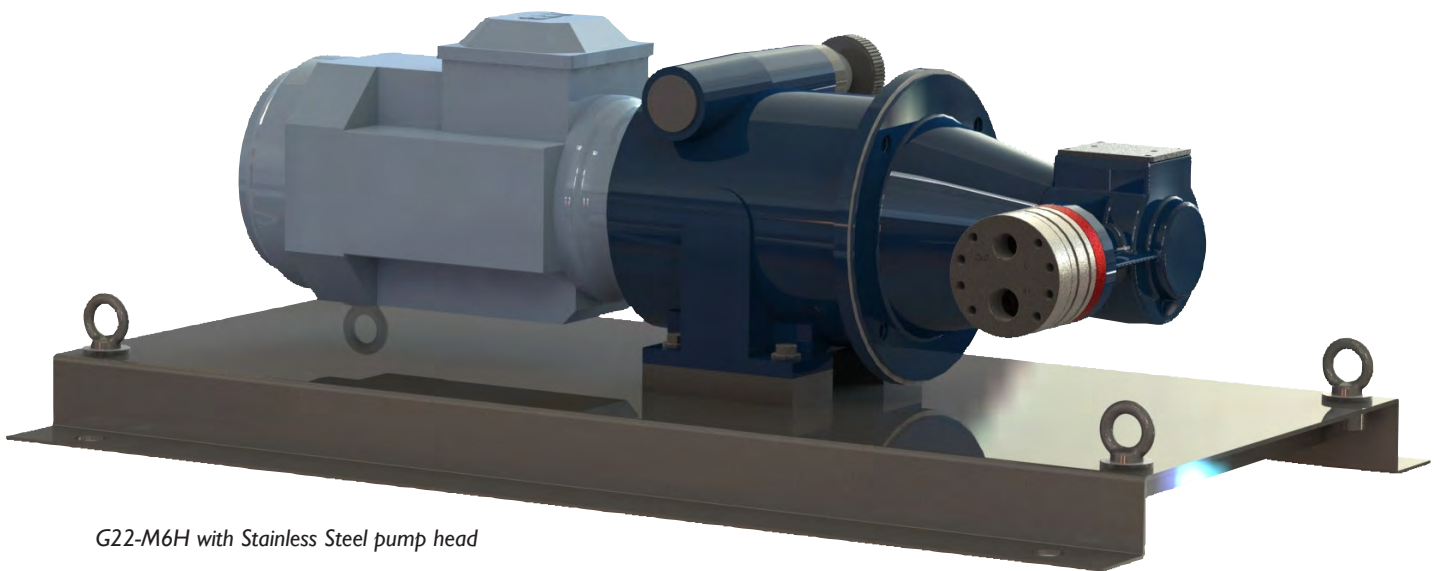


# G22 Series Dosing Range

Maximum Flow Rate: up to 156 l/hr (41 gph)  
Maximum Pressure: up to 103 bar (1500 psi) for Metallic Pump Heads  
up to 24 bar (350 psi) for non-metallic Pump Heads



**WANNER**  
*Hydra-Cell*<sup>®</sup>  
Seal-less Pump Technology



G22-M6H with Stainless Steel pump head

## Meeting & Exceeding API 675 Performance Standards

- Steady State Accuracy:  $\pm 1\%$
- Linearity:  $\pm 3\%$  (over a 10 to 1 turn-down as per API 675)
- Repeatability:  $\pm 3\%$
- Infinite turn-down achievable

# G22 Series Dosing Range Performance

## Capacities

### Flow

Model	Max. Pump Input rpm	Min. Flow		Max. Flow	
		gph	l/hr	gph	l/hr
<b>@ 103 bar (1500 psi)</b>					
G22-M2H	1200	3.5	13.2	41.2	156
G22-M4H	600	1.7	6.6	20.6	78
G22-M6H	390	1.1	4.2	13.2	50
<b>@ 30 bar (435 psi)</b>					
G22-M2L	1200	3.5	13.2	41.2	156
G22-M4L	600	1.7	6.6	20.6	78
G22-M6L	390	1.1	4.2	13.2	50

### Pressure

#### Maximum Inlet Pressure

Up to 17 bar (250 psi) for all models

#### Maximum Discharge Pressure

Metallic Pump Heads:

G22-M2H up to 103 bar (1500 psi) @ 1200 rpm max.

G22-M4H up to 103 bar (1500 psi) @ 600 rpm max.

G22-M6H up to 103 bar (1500 psi) @ 390 rpm max.

G22-M2L up to 30 bar (435 psi) @ 1200 rpm max.

G22-M4L up to 30 bar (435 psi) @ 600 rpm max.

G22-M6L up to 30 bar (435 psi) @ 390 rpm max.

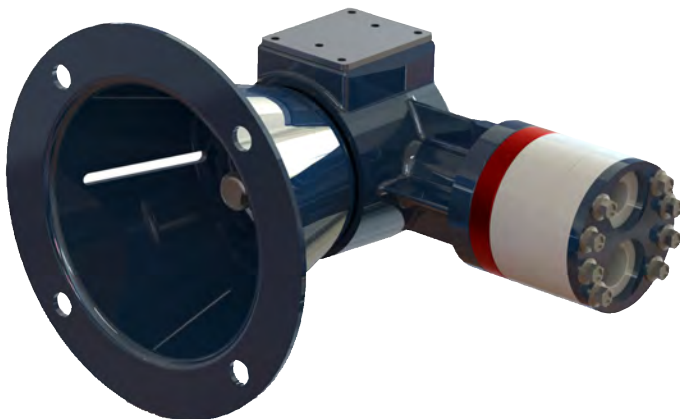
Non-metallic Pump Heads (for all models):

Up to 17 bar (250 psi) Polypropylene

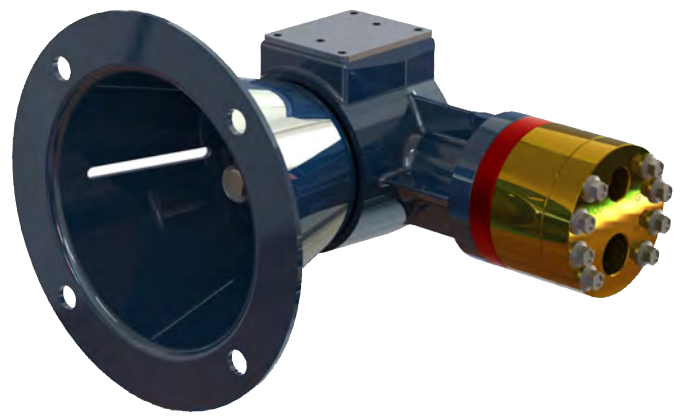
Up to 24 bar (350 psi) PVDF

*Performance and specification ratings apply to G22 configurations unless specifically noted otherwise.*

## Pump Head Examples



G22 Flexible-coupled with Polypropylene pump head



G22 Flexible-coupled with Brass pump head

# G22 Series Dosing Range Specifications

## Flow Capacities @ 103 bar (1500 psi)

Model	Max. Pump Input rpm	Min. Flow		Max. Flow	
		gph	l/hr	gph	l/hr
G22-M2H	1200	3.5	13.2	41.2	156
G22-M4H	600	1.7	6.6	20.6	78
G22-M6H	390	1.1	4.2	13.2	50

## Flow Capacities @ 30 bar (435 psi)

Model	Max. Pump Input rpm	Min. Flow		Max. Flow	
		gph	l/hr	gph	l/hr
G22-M2L	1200	3.5	13.2	41.2	156
G22-M4L	600	1.7	6.6	20.6	78
G22-M6L	390	1.1	4.2	13.2	50

## Maximum Discharge Pressure

Metallic Heads	G22-M2H:	up to 103 bar (1500 psi) @ 1200 rpm max.
	G22-M4H:	up to 103 bar (1500 psi) @ 600 rpm max.
	G22-M6H:	up to 103 bar (1500 psi) @ 390 rpm max.
	G22-M2L:	up to 30 bar (435 psi) @ 1200 rpm max.
	G22-M4L:	up to 30 bar (435 psi) @ 600 rpm max.
	G22-M6L:	up to 30 bar (435 psi) @ 390 rpm max.

## Non-metallic Heads (for all models)

Up to 17 bar (250 psi) Polypropylene
Up to 24 bar (350 psi) PVDF

## Maximum Inlet Pressure Up to 17 bar (250 psi) for all models

## Maximum Operating Temperature

Metallic Heads	121 °C (250 °F) - Consult factory for correct component selection for temperatures from 71 °C (160 °F) to 121 °C (250 °F).
----------------	--

Non-metallic Heads	60 °C (140 °F)
--------------------	----------------

## Maximum Solids Size 200 microns

Inlet Port	1/2 inch BSPT
	1/2 inch NPT

Discharge Port	3/8 inch BSPT
	3/8 inch NPT

## Shaft Diameter (for motor input)

G22:	19mm (3/4 inch)
G22-M2H:	Requires a 1.5kW, IEC 90, 2-Pole, B14 Motor
G22-M4H:	Requires a 0.75kW, IEC 80, 4-Pole, B14 Motor
G22-M6H:	Requires a 0.55kW, IEC 80, 6-Pole, B14 Motor
G22-M2L:	Requires a 0.55kW, IEC 71, 2-Pole, B14 Motor
G22-M4L:	Requires a 0.37kW, IEC 71, 4-Pole, B14 Motor
G22-M6L:	Requires a 0.25kW, IEC 71, 6-Pole, B14 Motor

Shaft Rotation	Reverse (bi-directional)
----------------	--------------------------

Bearings	Precision ball bearings
----------	-------------------------

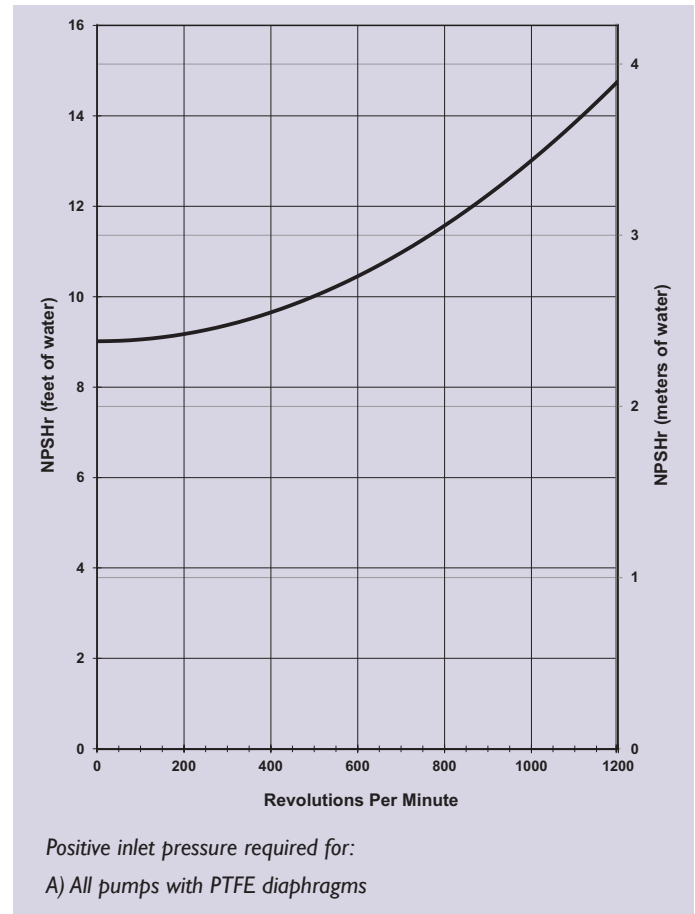
Oil Capacity	G22 Pump Only: 0.12 litres (0.125 US quarts)
--------------	--

Traction Fluid Capacity	G22-M2H Gearbox Only: 300 ml (0.32 US quarts)
	G22-M4H Gearbox Only: 300 ml (0.32 US quarts)
	G22-M6H Gearbox Only: 300 ml (0.32 US quarts)
	G22-M2L Gearbox Only: 160 ml (0.17 US quarts)
	G22-M4L Gearbox Only: 160 ml (0.17 US quarts)
	G22-M6L Gearbox Only: 160 ml (0.17 US quarts)

## Weight

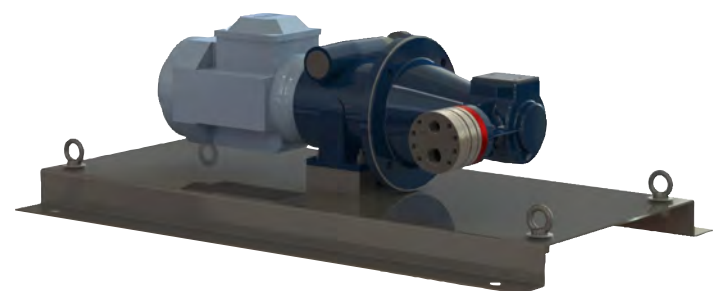
	Metallic Heads	Non-metallic Heads
G22 Pump:	5.5kg	4.1 kg
G22-M2H Assembly:	approx. 72 kg	approx. 70.5 kg
G22-M4H Assembly:	approx. 68 kg	approx. 66.5 kg
G22-M6H Assembly:	approx. 68 kg	approx. 66.5 kg
G22-M2L Assembly:	approx. 38 kg	approx. 36.5 kg
G22-M4L Assembly:	approx. 38 kg	approx. 36.5 kg
G22-M6L Assembly:	approx. 38 kg	approx. 36.5 kg

## Net Positive Suction Head (NPSHr)



## Self-priming:

Each Hydra-Cell pump has different lift capability depending on model size, cam angle, speed, and fluid characteristics. To ensure that your specific lift characteristics are met, refer to the inlet calculations regarding friction, and acceleration head losses in your Hydra-Cell Installation & Service Manual. Compare those calculations to the NPSHr curves above.



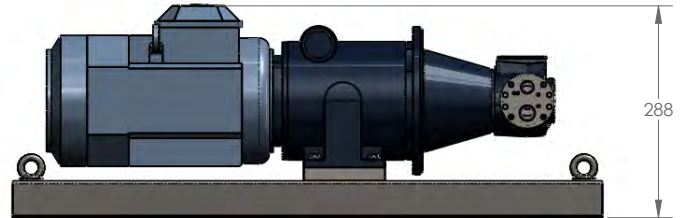
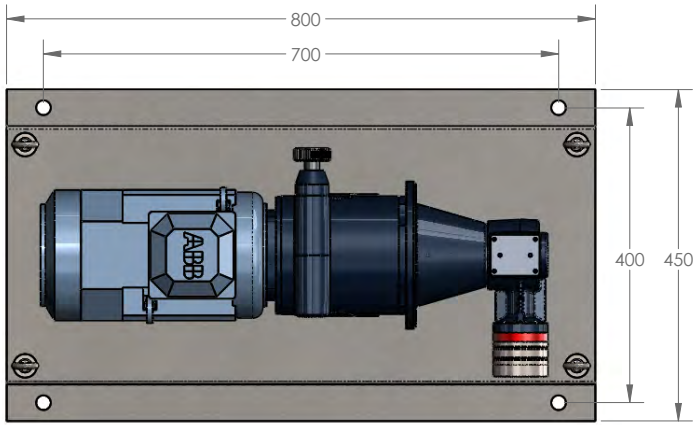
G22-M2L with Stainless Steel pump head

# G22 Series Dosing Range General Assemblies

## Model G22-M2H

Dosing range 13.2 - 156 l/hr (3.5 - 41.2 gph) @ 103 bar (1500 psi) max.

G22-M2H

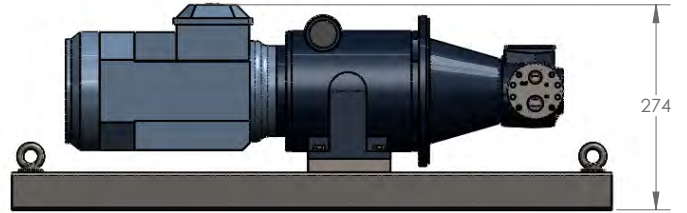
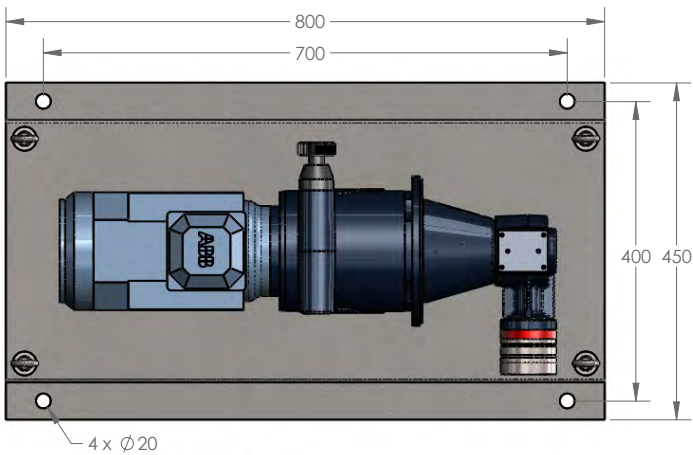


Unit Weight = 72 Kg

## Model G22-M4H

Dosing range 6.6 - 78 l/hr (1.7 - 20.6 gph) @ 103 bar (1500 psi) max.

G22-M4H

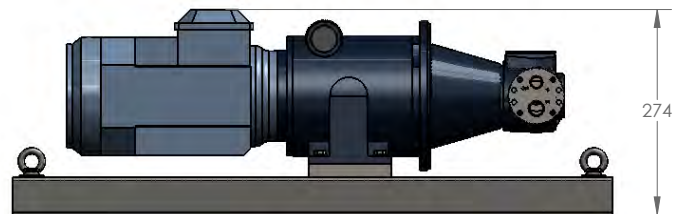
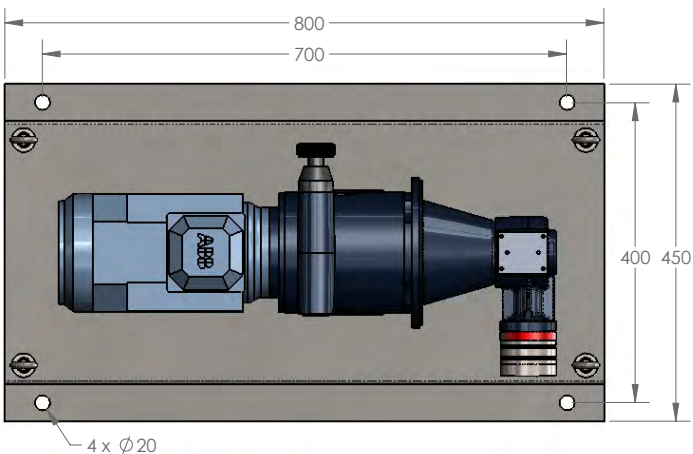


Unit Weight = 68 Kg

## Model G22-M6H

Dosing range 4.2 - 50 l/hr (1.1 - 13.2 gph) @ 103 bar (1500 psi) max.

G22-M6H



Unit Weight = 68 Kg

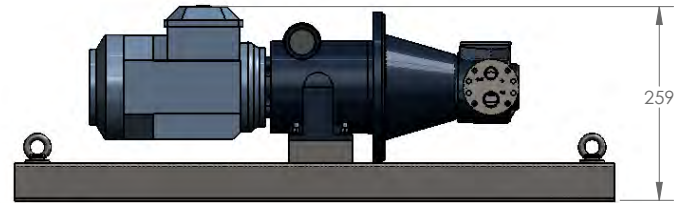
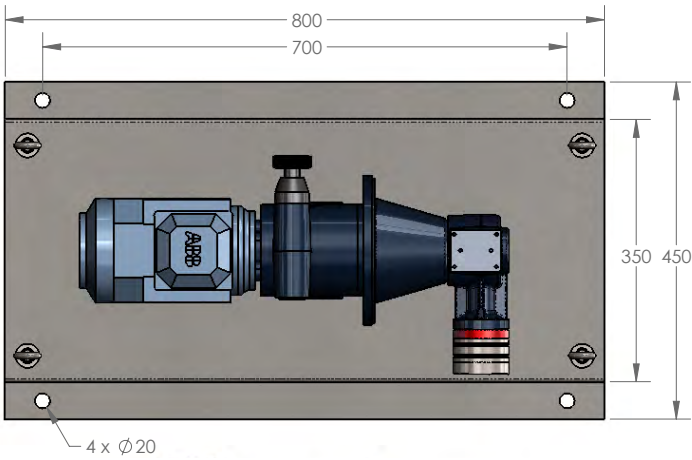


# G22 Series Dosing Range General Assemblies

## Model G22-M2L

Dosing range 13.2 - 156 l/hr (3.5 - 41.2 gph) @ 30 bar (435 psi) max.

G22-M2L

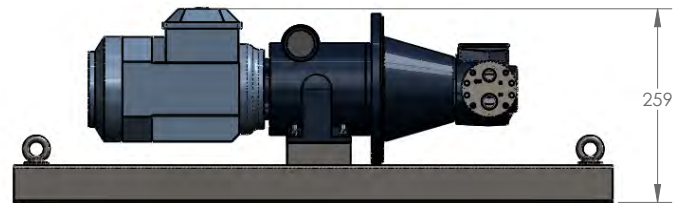
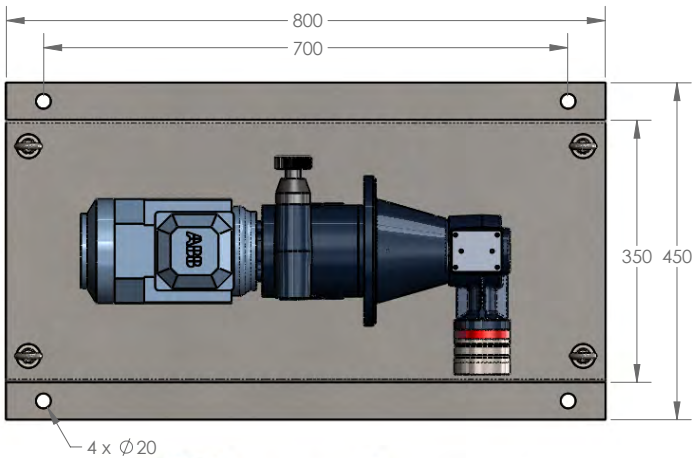


Unit Weight = 38 Kg

## Model G22-M4L

Dosing range 6.6 - 78 l/hr (1.7 - 20.6 gph) @ 30 bar (435 psi) max.

G22-M4L

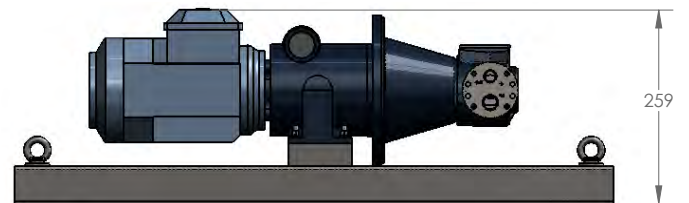
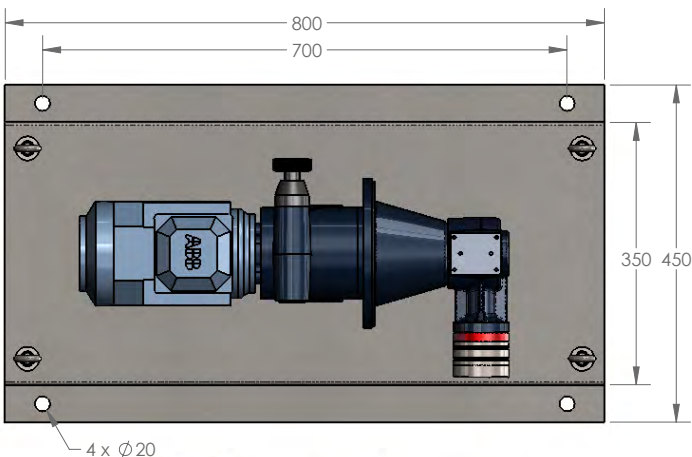


Unit Weight = 38 Kg

## Model G22-M6L

Dosing range 4.2 - 50 l/hr (1.1 - 13.2 gph) @ 30 bar (435 psi) max.

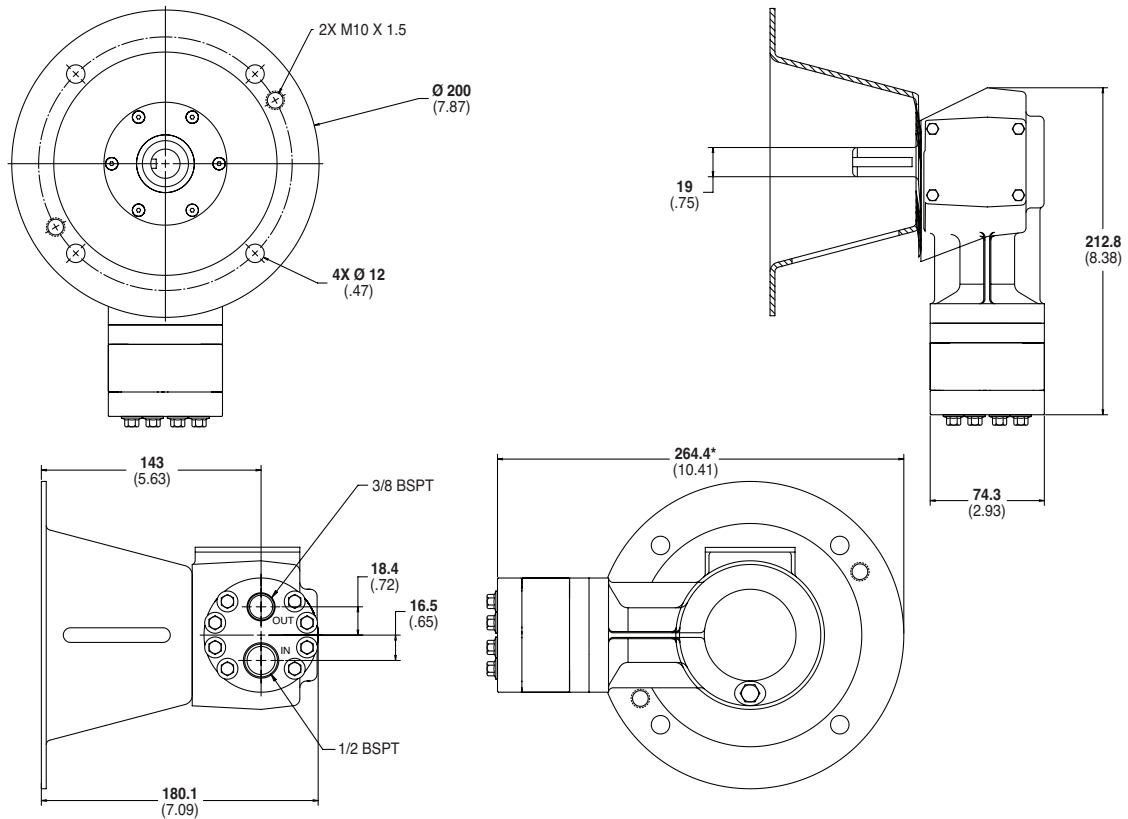
G22-M6L



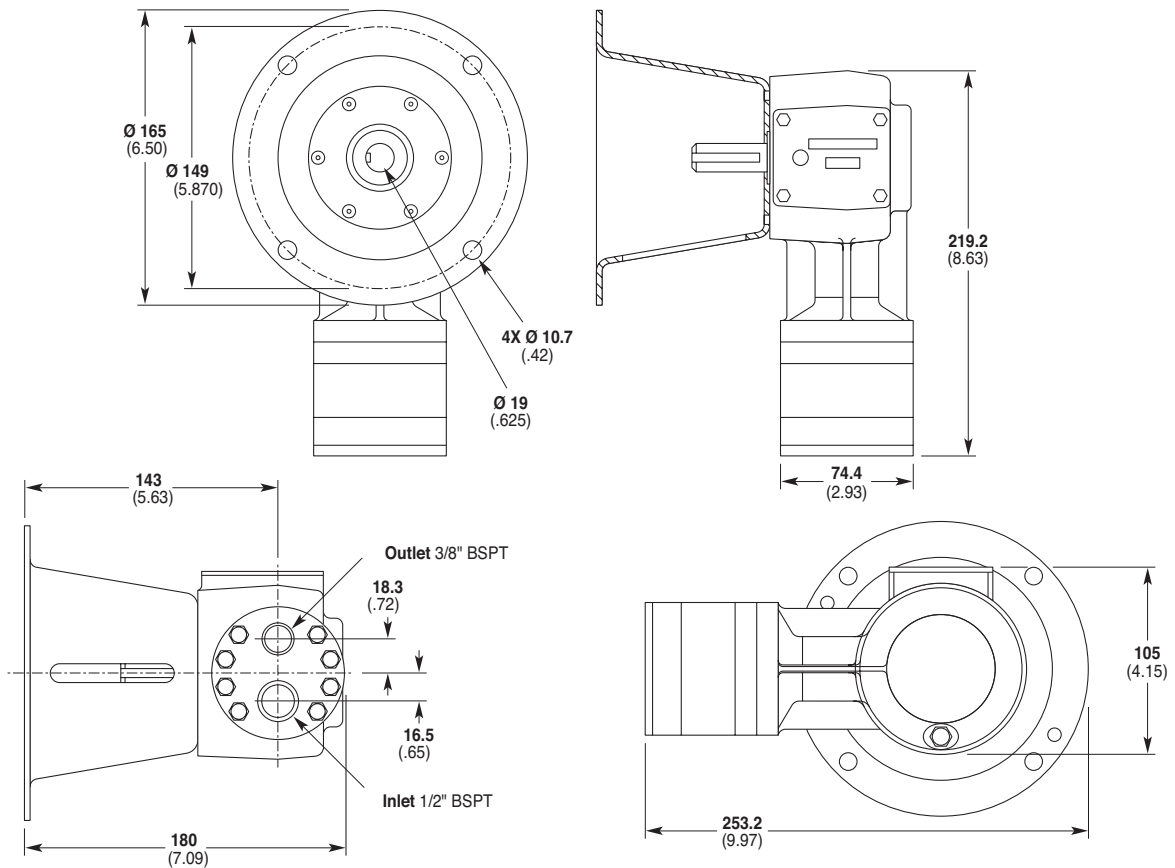
Unit Weight = 38 Kg

# G22 Series Representative Drawings

## G22 Models with Metallic Pump Head mm (Inches)



## G22 Models with Non-Metallic Pump Head mm (Inches)



**Note:** Contact factory for additional drawings of specific models and configurations.

# G22 Series Dosing Range How to Order

## Ordering Information

1	G	2	2	3	2	4	X	5	D	6		7		8		9		10		11		12		13	M	14		15	
---	---	---	---	---	---	---	---	---	---	---	--	---	--	---	--	---	--	----	--	----	--	----	--	----	---	----	--	----	--

A complete G22 Series Dosing Range Model Number contains 15 digits including 9 customer-specified design and materials options, for example: G22XDSJHNEHGM6H.

Digit	Order Code	Description
<b>1-3</b>		<b>Pump Configuration</b>
	<b>G22</b>	For use with pump/motor adaptor (BSPT Ports)* *Pump/motor adaptors ordered separately.
<b>4</b>		<b>Hydraulic End Cam</b>
	<b>X</b>	Max. 156 l/hr (41.2 gph) @ 1200 rpm
<b>5</b>		<b>Pump Head Version</b>
	<b>D</b>	BSPT Ports
	-	ATEX 2014/34/EU Certified, Category 2, Zone 1, Hazardous Liquids
	-	ATEX 2014/34/EU Certified, Category 2, Zone 1, Non-Hazardous Liquids
	-	ATEX 2014/34/EU Certified, Category 3, Zone 2
		<i>Note: All options include Certificate, Oil Level Monitor or Sight Glass, Earth Stud &amp; Secondary ATEX Label.</i>
<b>6</b>		<b>Pump Head Material</b>
	<b>B</b>	Brass
	<b>M</b>	PVDF
	<b>P</b>	Polypropylene
	<b>S</b>	316L Stainless Steel
	<b>T</b>	Hastelloy C
<b>7</b>		<b>Diaphragm &amp; O-ring Material</b>
	<b>A</b>	Aflas diaphragm / PTFE o-ring
	<b>E</b>	EPDM (requires EPDM-compatible oil - Digit 12 oil code J)
	<b>G</b>	FKM
	<b>J</b>	PTFE (available with X and E cams only)
	<b>P</b>	Neoprene
	<b>T</b>	Buna-N
<b>8</b>		<b>Valve Seat Material</b>
	<b>C</b>	Ceramic
	<b>D</b>	Tungsten Carbide
	<b>H</b>	17-4 Stainless Steel
	<b>S</b>	316L Stainless Steel
	<b>T</b>	Hastelloy C
<b>9</b>		<b>Valve Material</b>
	<b>C</b>	Ceramic
	<b>D</b>	Tungsten Carbide
	<b>F</b>	17-4 Stainless Steel
	<b>N</b>	Nitronic 50
	<b>T</b>	Hastelloy C
<b>10</b>		<b>Valve Springs</b>
	<b>E</b>	Elgiloy
	<b>T</b>	Hastelloy C

Digit	Order Code	Description
<b>11</b>		<b>Valve Spring Retainers</b>
	<b>C</b>	Celcon
	<b>H</b>	17-7 Stainless Steel
	<b>M</b>	PVDF
	<b>P</b>	Polypropylene
	<b>T</b>	Hastelloy C
	<b>Y</b>	Nylon
<b>12</b>		<b>Hydra-Oil</b>
	<b>G</b>	5W30 cold-temp severe-duty synthetic oil
	<b>J</b>	20-wt EPDM-compatible oil
	<b>K</b>	Food-contact oil
<b>13 - 15</b>		<b>Dosing Range</b>
	<b>M2H</b>	13.2 - 156 l/hr (3.5 - 41.2 gph) @ 1200 rpm max. Requires a 1.5kW, IEC 90, 2-Pole B14 Motor (not included but available on request)
	<b>M4H</b>	6.6 - 78 l/hr (1.7 - 20.6 gph) @ 600 rpm max. Requires a 0.75kW, IEC 80, 4-Pole B14 Motor (not included but available on request)
	<b>M6H</b>	4.2 - 50 l/hr (1.1 - 13.2 gph) @ 390 rpm max. Requires a 0.55kW, IEC 80, 6-Pole B14 Motor (not included but available on request)
	<b>M2L</b>	13.2 - 156 l/hr (3.5 - 41.2 gph) @ 1200 rpm max. Requires a 0.55kW, IEC 71, 2-Pole B14 Motor (not included but available on request)
	<b>M4L</b>	6.6 - 78 l/hr (1.7 - 20.6 gph) @ 600 rpm max. Requires a 0.37kW, IEC 71, 4-Pole B14 Motor (not included but available on request)
	<b>M6L</b>	4.2 - 50 l/hr (1.1 - 13.2 gph) @ 390 rpm max. Requires a 0.25kW, IEC 71, 6-Pole B14 Motor (not included but available on request)

**Note:** As the G22 is a simplex pump, the installation of a Pulsation Dampener is recommended



Scope of supply as above



**WANNER ENGINEERING - WORLD HEADQUARTERS & MANUFACTURING**  
Minneapolis USA  
t: (612) 332-5681  
e: sales@wannereng.com

**WANNER PUMPS**  
Kowloon HONG KONG  
t: +852 3428 6534  
e: sales@wannerpumps.com

**WANNER INTERNATIONAL**  
Hampshire UK  
t: +44 (0) 1252 816847  
e: sales@wannerint.com

**WANNER ENGINEERING**  
Latin American Office  
t: +55 (11) 4081-7098  
e: sales@wannereng.com

**WANNER PUMPS**  
Shanghai CHINA  
t: +86-21-6876 3700  
e: sales@wannerpumps.com